

## MILL CREEK

### General Watershed Characteristics

Mill Creek is a small urban watershed located within in Cuyahoga County, Ohio. Flowing through some of the most densely populated areas in the state, Mill Creek originates in the cities of Shaker Heights and Beachwood and flows southwest before discharging into the Cuyahoga River in Cuyahoga Heights. Typical of many urban streams, Mill Creek has been subject to the affects of extensive urbanization over a period of more than 150 years. These impacts have made significant changes to the stream habitat, adjacent floodplains and riparian corridors, erosion and sedimentation levels and the quantity and quality of stormwater runoff.

**Location:** Northeast Ohio, Cuyahoga County, including the communities of Beachwood, Cleveland, Cuyahoga Heights, Garfield Heights, Highland Hills, Maple Heights, North Randall, Shaker Heights and Warrensville Heights

### Characteristics:

Drainage: Approximately 19 square miles

Length: 12.2 miles

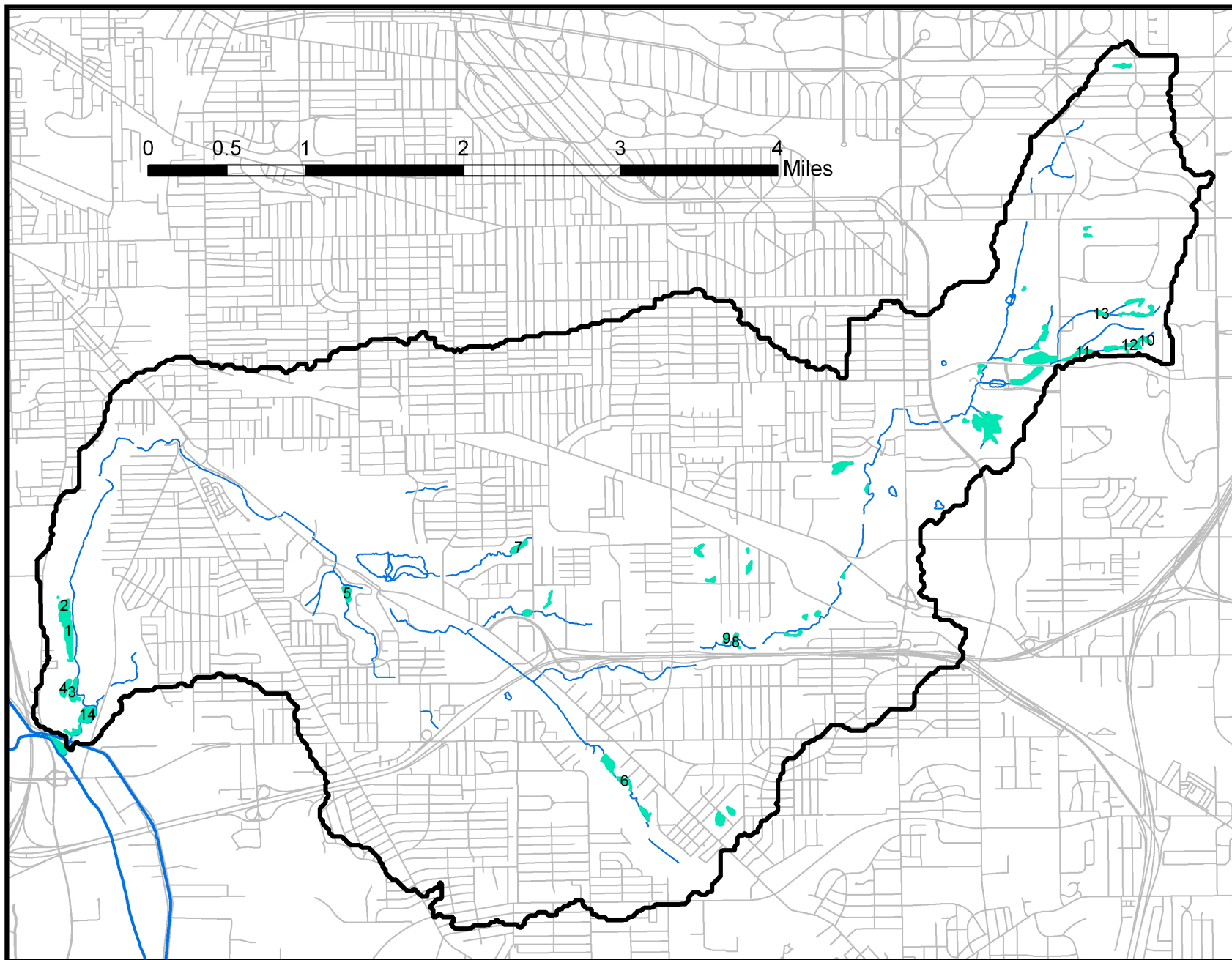
Gradient: Average gradient of 53.5 ft/mile

Land Cover Characteristics (2001)	Percent of Drainage Area
Urban	48.42
Grass & Agriculture	36.13
Shrub & Scrub Cover	4.11
Wooded	15.25
Barren & Misc.	.98
Streams & Surface Water	38

Wetlands Summary- Mill Creek	
Number of Wetlands	57
Total Acres	96.74 acres
Average Size	1.70 acres
Average Wetland Forested Buffer Condition	Low Quality (25-50%)
Top Ten Wetland Acres	26.25 acres
Top Ten Average Size	2.62 acres
Top Ten Average Wetland Buffer Condition	High Quality (>75-100%)
Total Restoration Potential Costs	\$521,629

### Mill Creek Wetland Results

A approximately 97 acres of wetlands were identified in the Mill Creek Watershed. Through our analysis we picked the top 10 wetlands sites. These 10 wetlands sites equaled 26 acres, or nearly 27% of the total wetland acreage in the watershed. Wetland sizes ranged from 8 acres to 0.68 acres.



## **Mill Creek Watershed Wetland Maps**

Mill Creek Wetland Ranked #1 & 2: MC_RAP714 & MC_RAP714-3	Scale: 1:5,000
Mill Creek Wetland Ranked #3 & 4: MC_RAP509 & MC_RAP098	Scale: 1:5,000
Mill Creek Wetland Ranked #5: MC_RAP709	Scale: 1:5,000
Mill Creek Wetland Ranked #6: MC_RAP386	Scale: 1:5,000
Mill Creek Wetland Ranked #7: MC_RAP165	Scale: 1:5,000
Mill Creek Wetland Ranked #8 & 9: MC_RAP574 & MC_RAP576	Scale: 1:5,000
Mill Creek Wetland Ranked #10: MC_RAP731-1	Scale: 1:5,000
Mill Creek Wetland Ranked #14: MC_RAP509-1	
Mill Creek Wetlands Locator Map	